

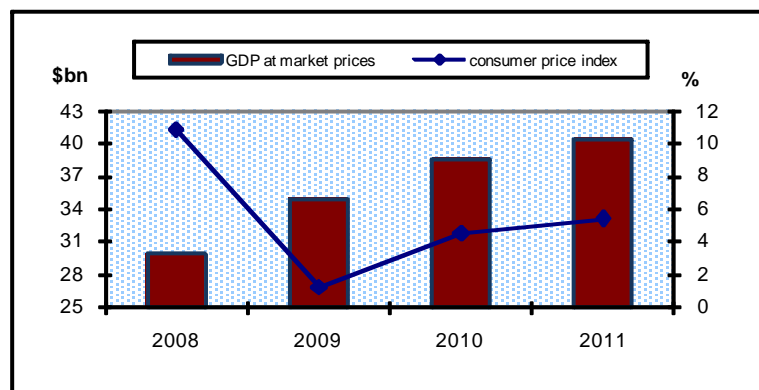
## Lebanese Economy Indicators 3<sup>rd</sup> quarter 2012

### Major Indicators

	2010	2011
Resident population (m)	4.5	4.5
GDP at market prices (\$bn)	38.5	40.5
Consumer price index (%)**	4.5	5.4
GDP Deflator	3	3.7
GDP Real Growth Rate	7	1.5
Imports (\$bn)	17.963	20.158
Exports (\$bn)	4.253	4.265
Balance of payments (\$m)	+3324.5	-1996.2
Forgn. Assets excl gold (\$bn)	28.60	30.82
External public debt (\$bn)	20.59	20.93
Exchange rate \$:LBP	1507.5	1507.5

Sources: Central Bank of Lebanon,  
Ministry of Finance, ABL, IMF, Economic  
Accounts of Lebanon.

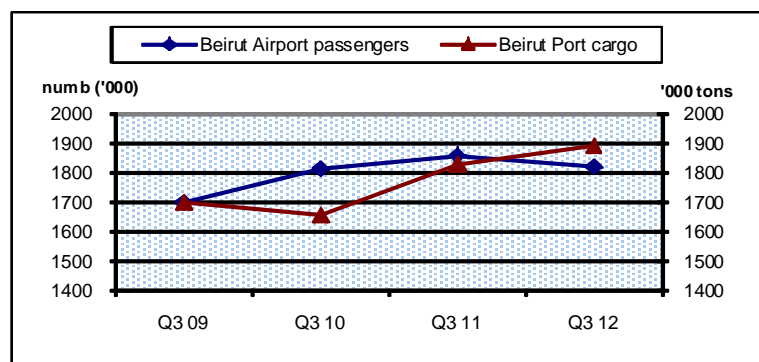
\*\* (Period Average)



### Transport

	Q3 11	Q3 12
<b>Number of tourists</b>	501896	372400
<b>Beirut Airport</b>		
Flights	18376	17507
Passengers	1859709	1820310
<b>Beirut port mvt.</b> ( '000 tons)	1828609	1890999

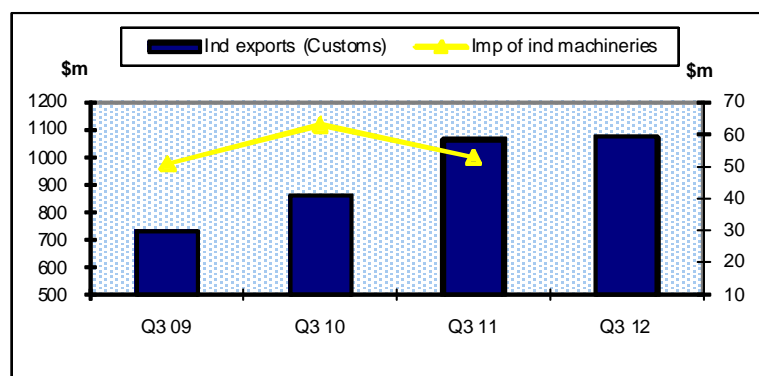
Sources: Central Bank of Lebanon,  
Association of Lebanese Banks.



### Industry

\$m	Q3 11	Q3 12
Industrial exports**	1066	1075
Imports of industrial machineries	53	n.a.

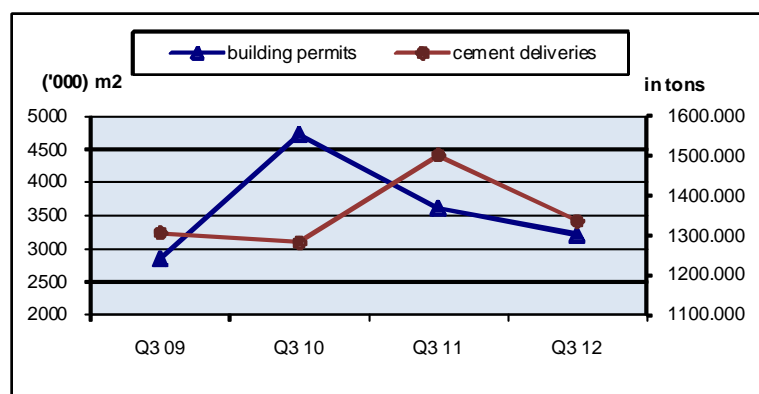
\*\* According to the Customs department



### Construction

	Q3 11	Q3 12
<b>Buildg permits</b> ( '000 m <sup>2</sup> )	3600	3210
<b>Cement deliv.</b> ( '000 tons)	1503	1336

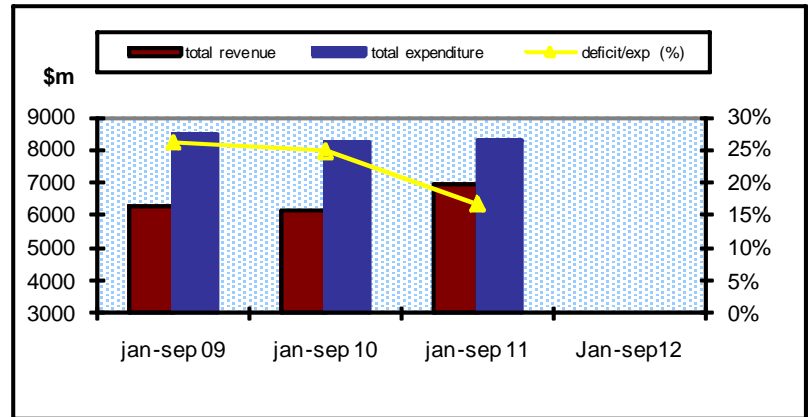
Sources: Central Bank of Lebanon,  
Association of Lebanese Banks.



### Public Revenues and Expenditures\*

\$m	Jan-Sep 2010	Jan-Sep 2011	Jan-Sep 2012
Total revenue	6185	6952	n.a.
Total expenditure of which:	8233	8347	n.a.
Interest expenditure	3125	2944	n.a.
Deficit/expendt (%)	24.88	16.71	n.a.

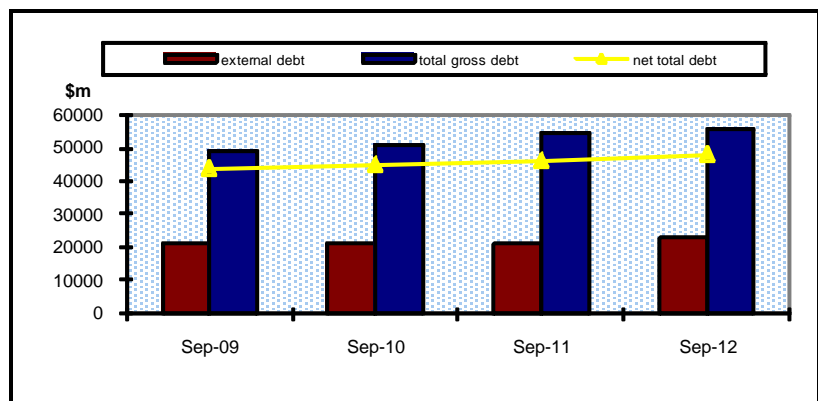
\* including treasury transactions  
Source: Ministry of Finance.



### The Lebanese Public Debt

\$m	Sep 2010	Sep 2011	Sep 2012
External debt	20990	21010	22821
Total Gross debt	50859	54377	56046
Public sect. dep.	6212	8542	8214
Net total debt	44647	45835	47832

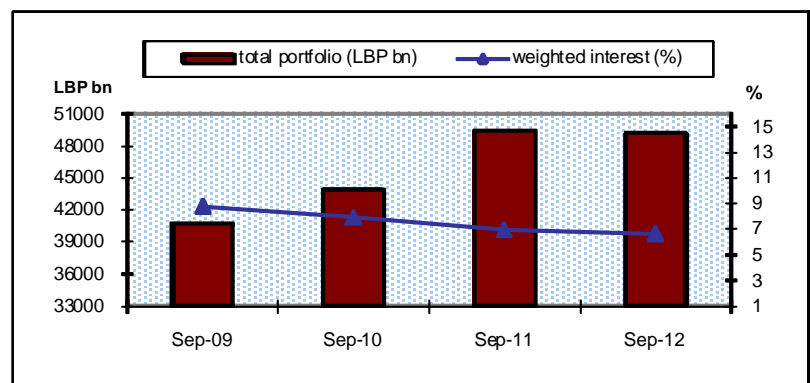
Sources: Central Bank of Lebanon, Association of Lebanese Banks.



### Outstanding Treasury Bills

	Sep 2010	Sep 2011	Sep 2012
Total portfolio (LBP bn)	43925	49380	49207
Weighted life (days)	575	937	974
Weighted interest (%)	7.93	6.94	6.65

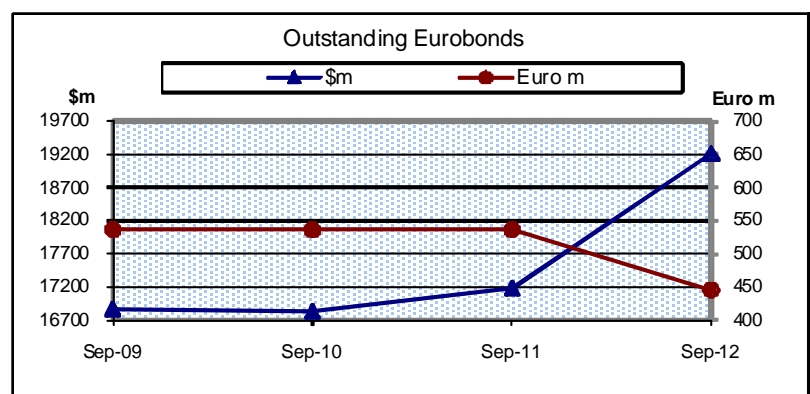
Source: Association of Lebanese Banks.



### Outstanding Eurobonds

	Sep 2010	Sep 2011	Sep 2012
Lebanese Republic:			
Million \$	16823	17177	19217
Million Euros	536	536	445

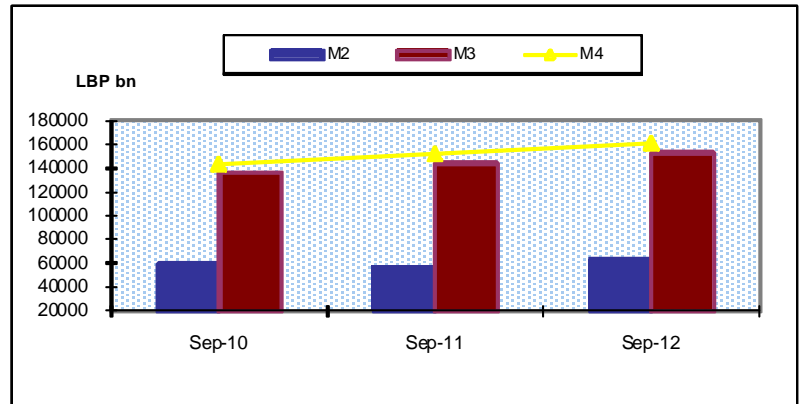
Source: Central Bank of Lebanon.



### Money Supply

LBP bn	Sep 2010	Sep 2011	Sep 2012
M1	5390	5805	6319
M2	59277	56805	63024
M3	135761	144158	153007
M4	143522	151960	161090
Cleared checks* value(\$bn) :	50.9	53.7	53
of which:Fx	40.97	43.12	41.95

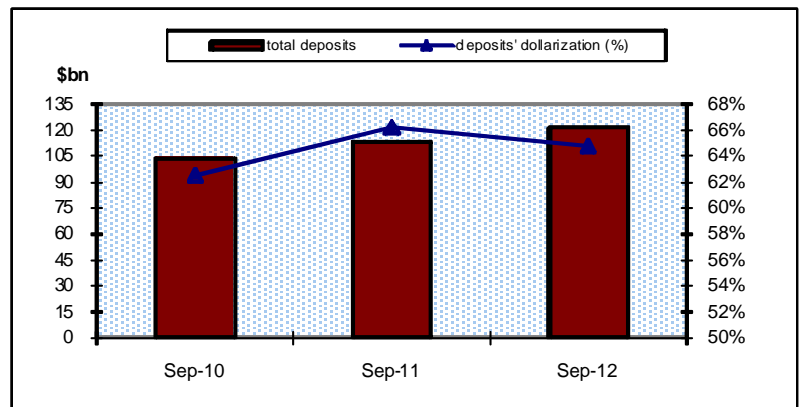
\* Since the beginning of the year  
Source: Association of Lebanese Banks,  
BDL(new statistics since sep 03)



### Banking Sector Indicators

\$bn	Sep 2010	Sep 2011	Sep 2012
<b>Private sector Res. &amp; non Res.</b>			
Total deposits	103.85	113.39	121.75
Deposits' dollarization	62.56	66.25	64.78
Total claims	33.82	38.76	42.29
Claims' dollarization	81.20	79.04	77.47
<b>Capital Base</b>	<b>9.10</b>	<b>10.38</b>	<b>11.89</b>
<b>Tot. consolidated Bal. sheet</b>	<b>126.74</b>	<b>138.42</b>	<b>148.36</b>

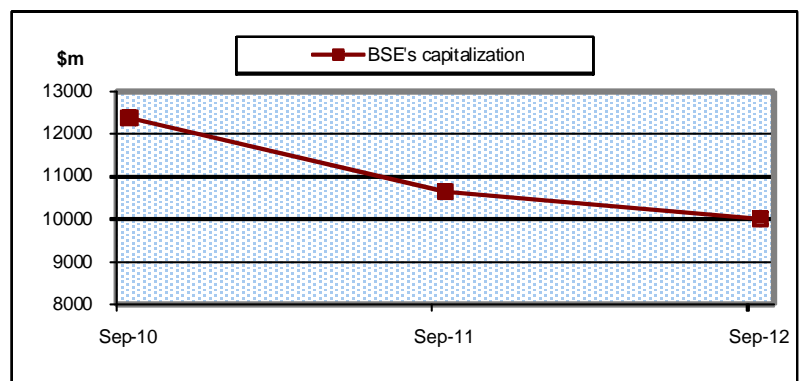
Source: Association of Lebanese Banks,  
BDL (new statistics since sep 03)



### Beirut Stock Exchange

	Q3 2010	Q3 2011	Q3 2012
Market Capit. \$m *	12381	10646	10015
Vol. traded shares**: m	16.01	10.63	13.73
Value traded shares**: \$m	204.78	104.60	104.12

\*listed shares, end of period.  
\*\* both inside and outside pit  
Sources: Beirut Stock Exchange, BDL.



### International Relations

\$m	Q3 2010	Q3 2011	Q3 2012
Total Imports	4609	5178	5150
Total Exports	901	1112	1127
<b>Trade Balance</b>	<b>-3708</b>	<b>-4066</b>	<b>-4023</b>
Customs Revenue	903	799	758
of which VAT	386	408	353
<b>Bal. of Payments</b>	<b>1626.8</b>	<b>-1059.8</b>	<b>-910.6</b>

Source: BDL, Association of Lebanese Banks.

